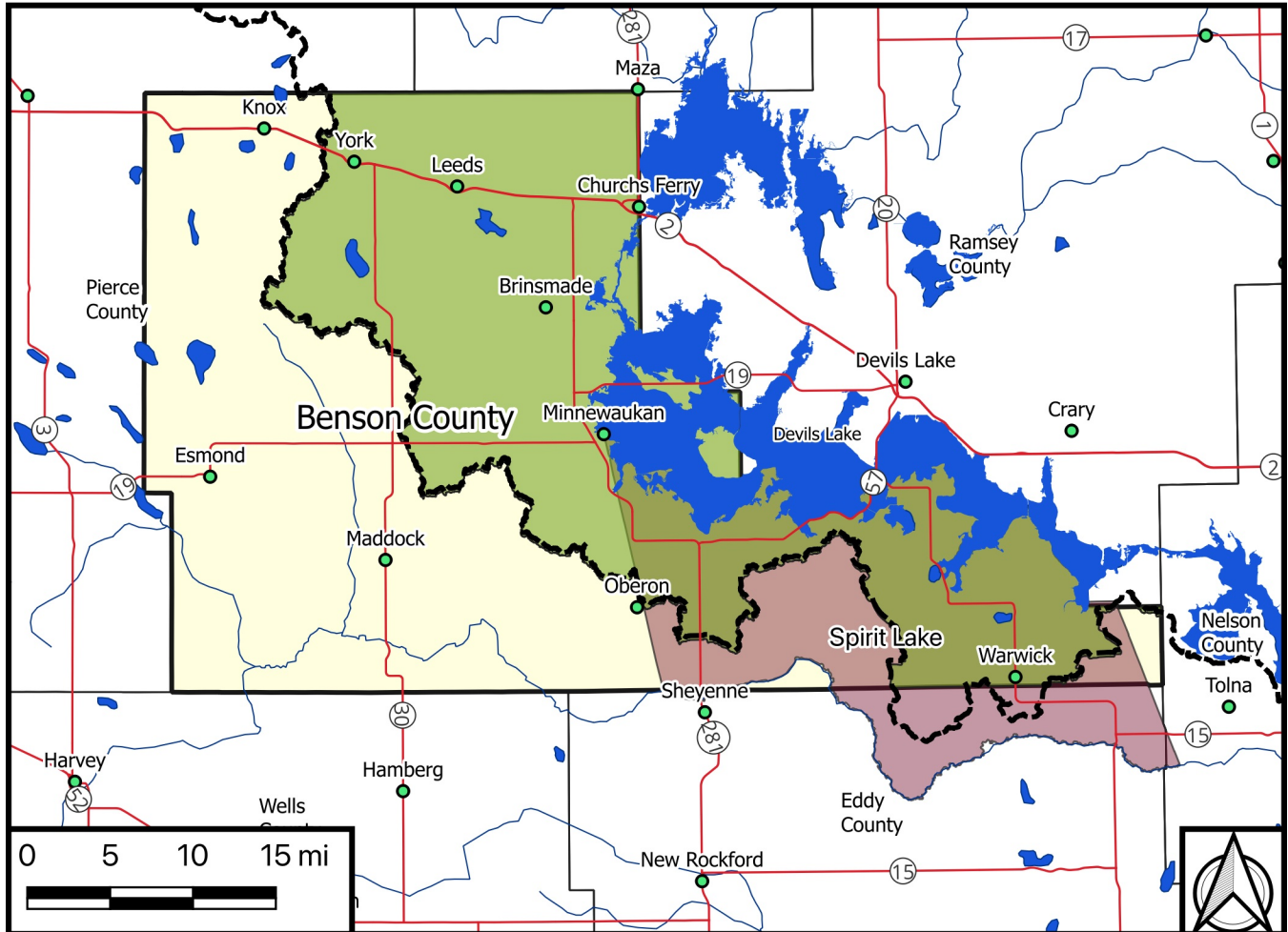
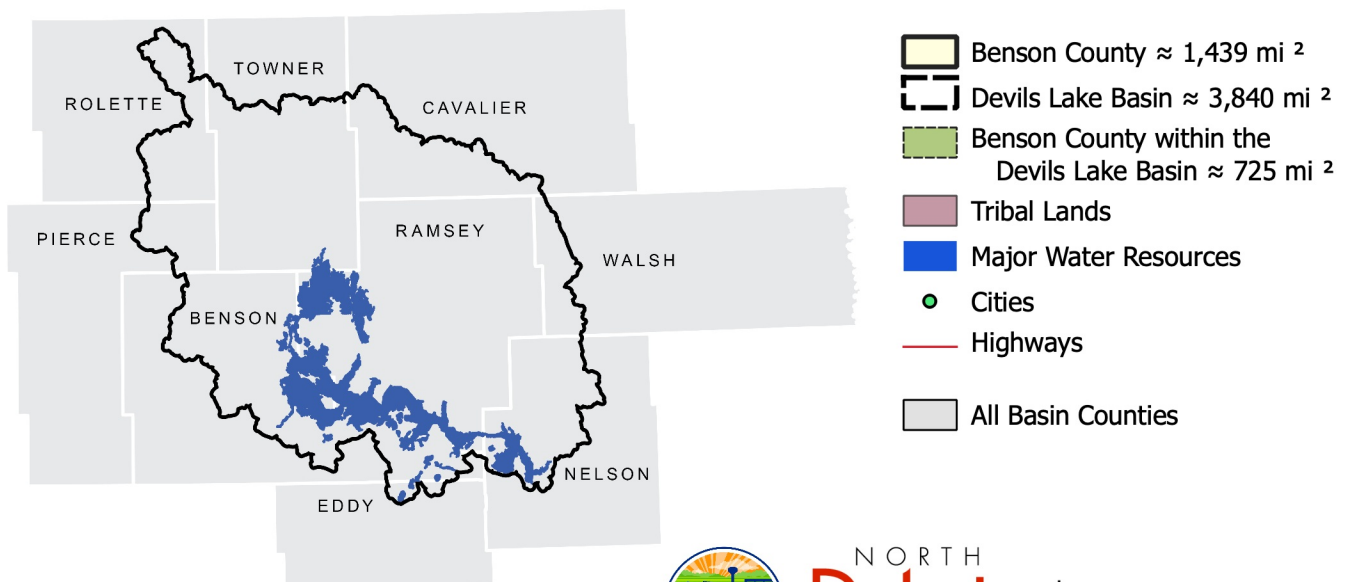


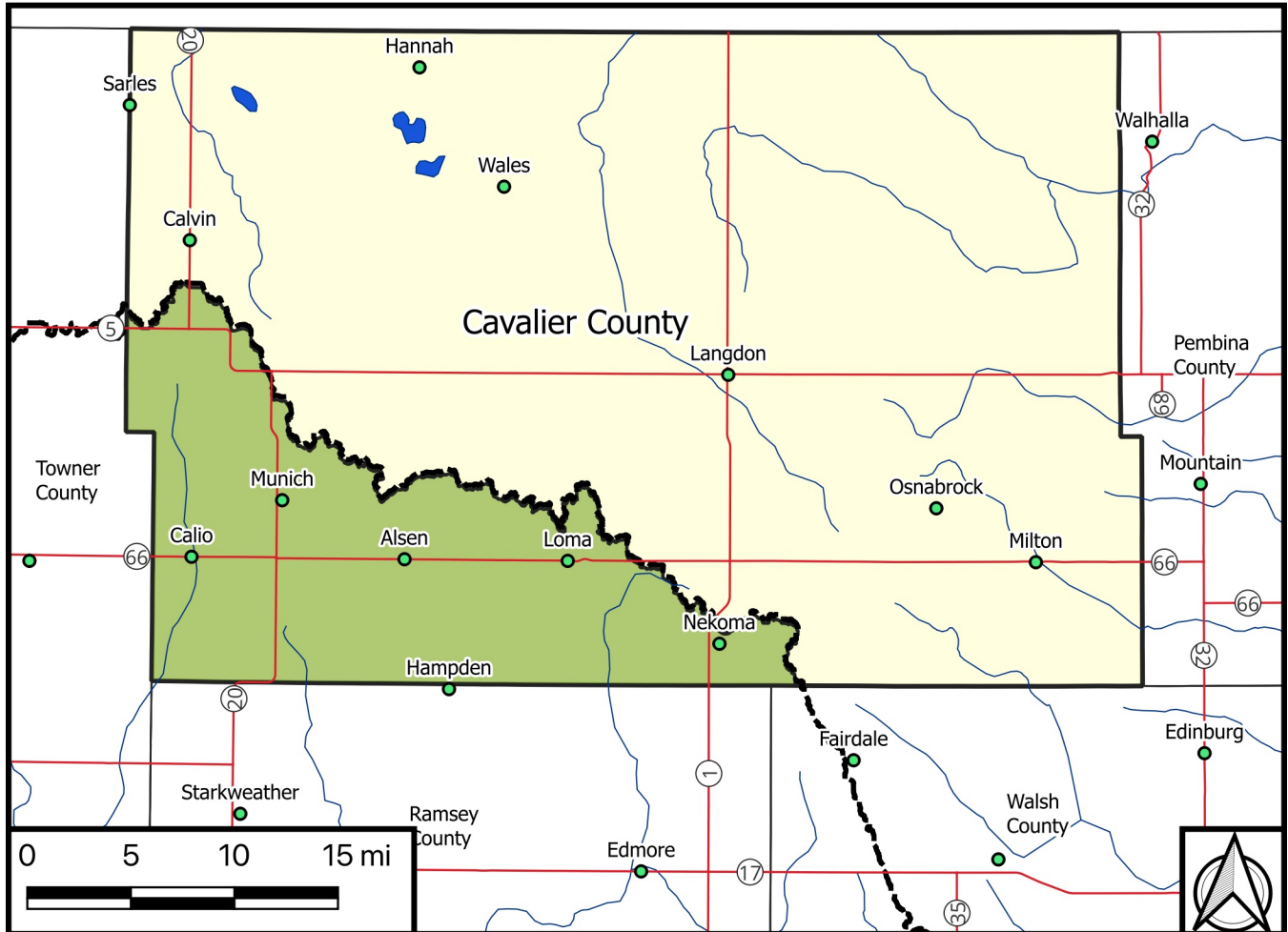
Benson County within the Devils Lake Basin



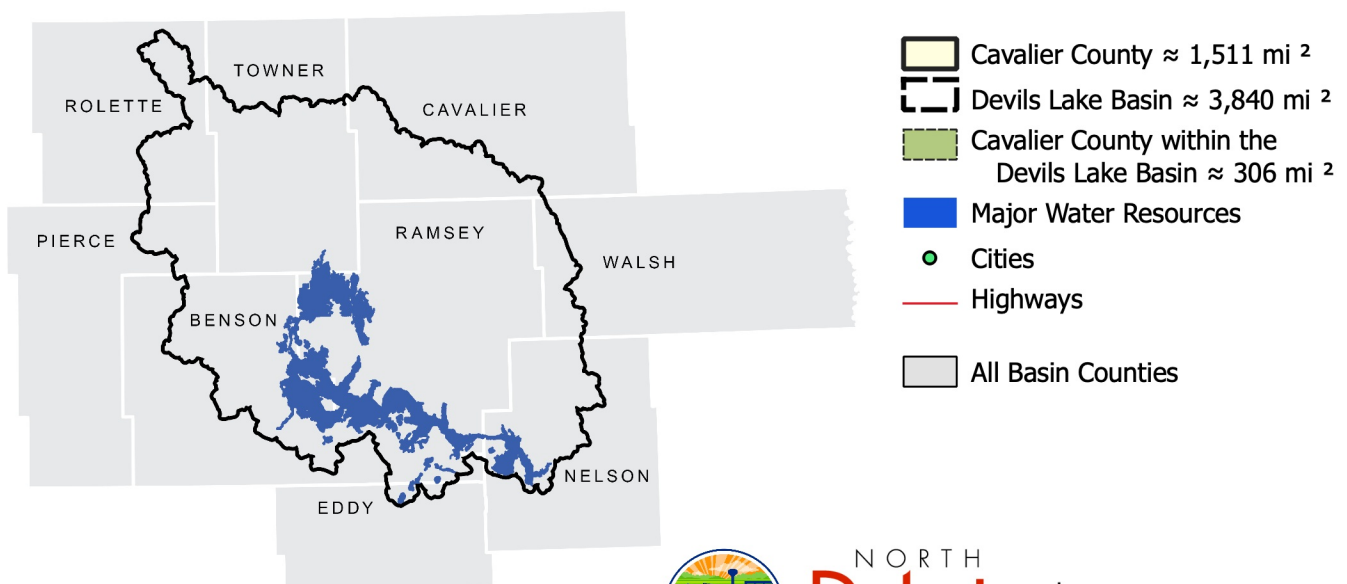
Approximately 50% of Benson County lies within the Devils Lake Basin
 Approximately 19% of the Devils Lake Basin lies within Benson County



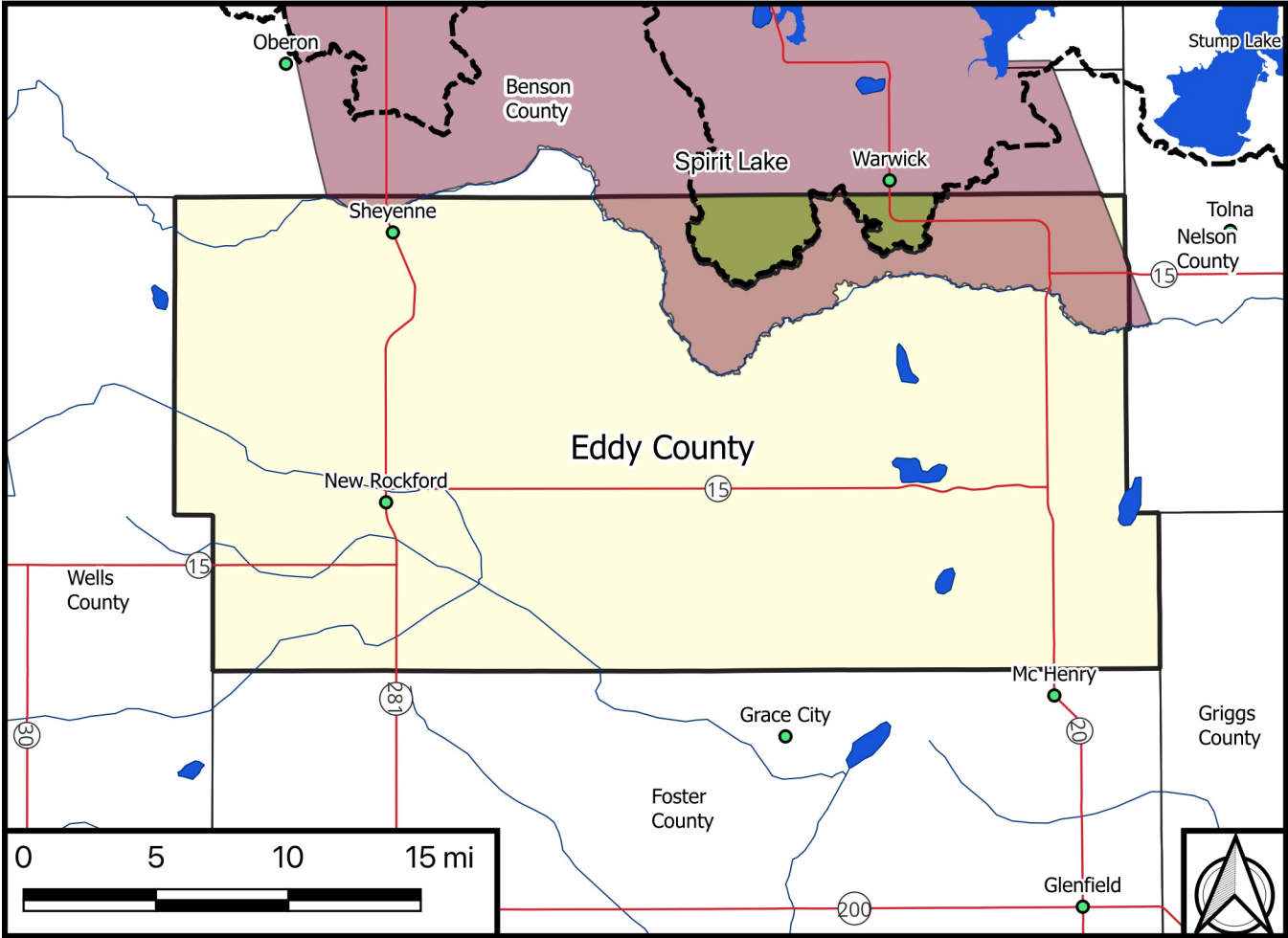
Cavalier County within the Devils Lake Basin



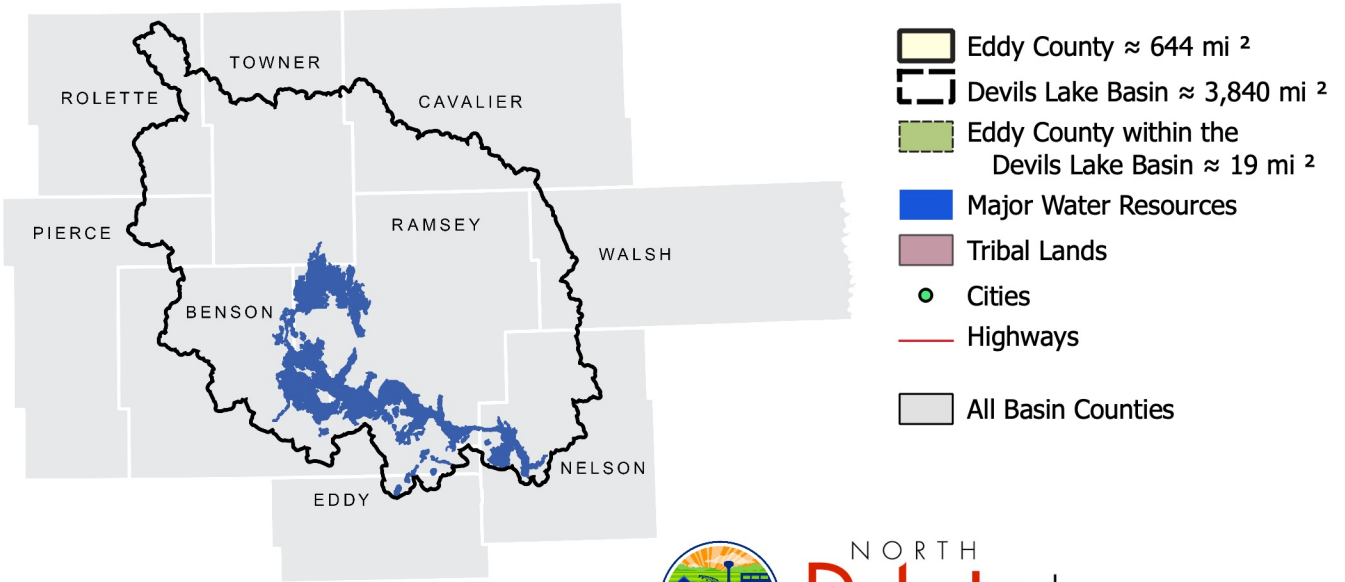
Approximately 20% of Cavalier County lies within the Devils Lake Basin
 Approximately 8% of the Devils Lake Basin lies within Cavalier County



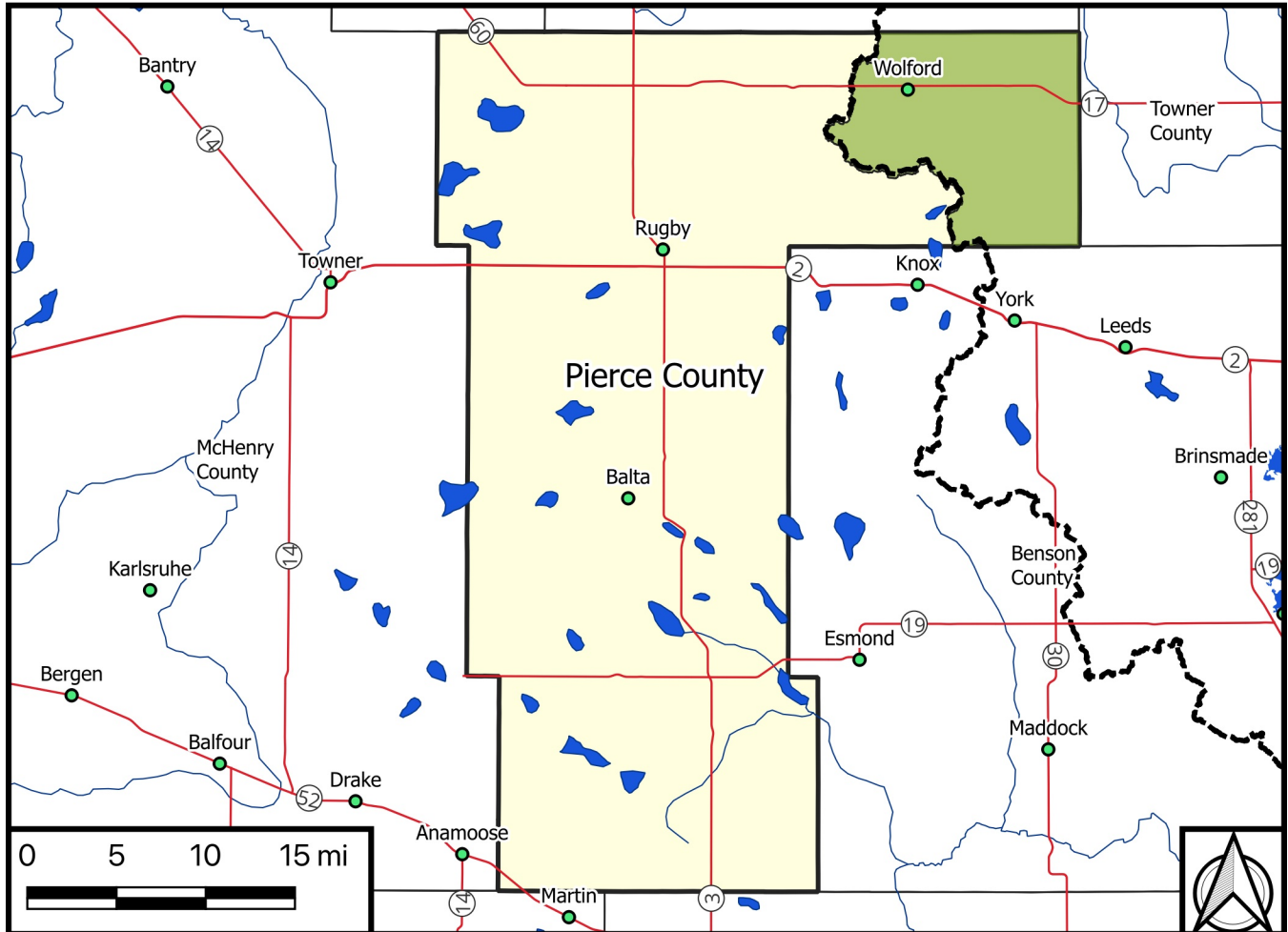
Eddy County within the Devils Lake Basin



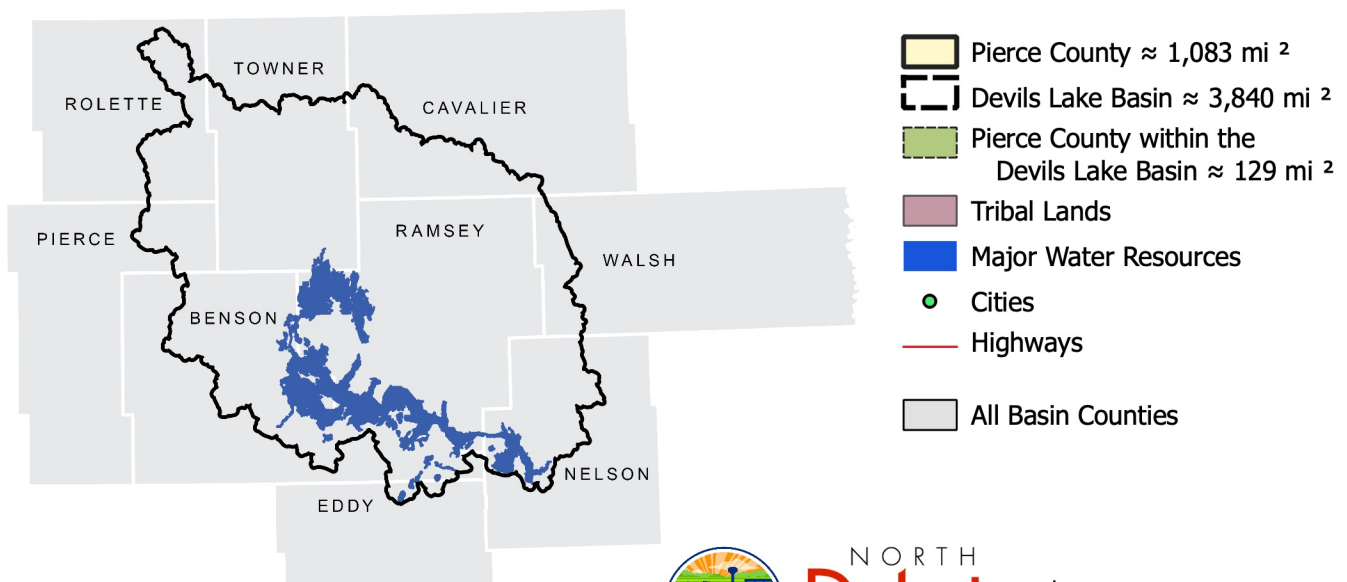
Approximately 3% of Eddy County lies within the Devils Lake Basin
 Approximately 0.5% of the Devils Lake Basin lies within Eddy County



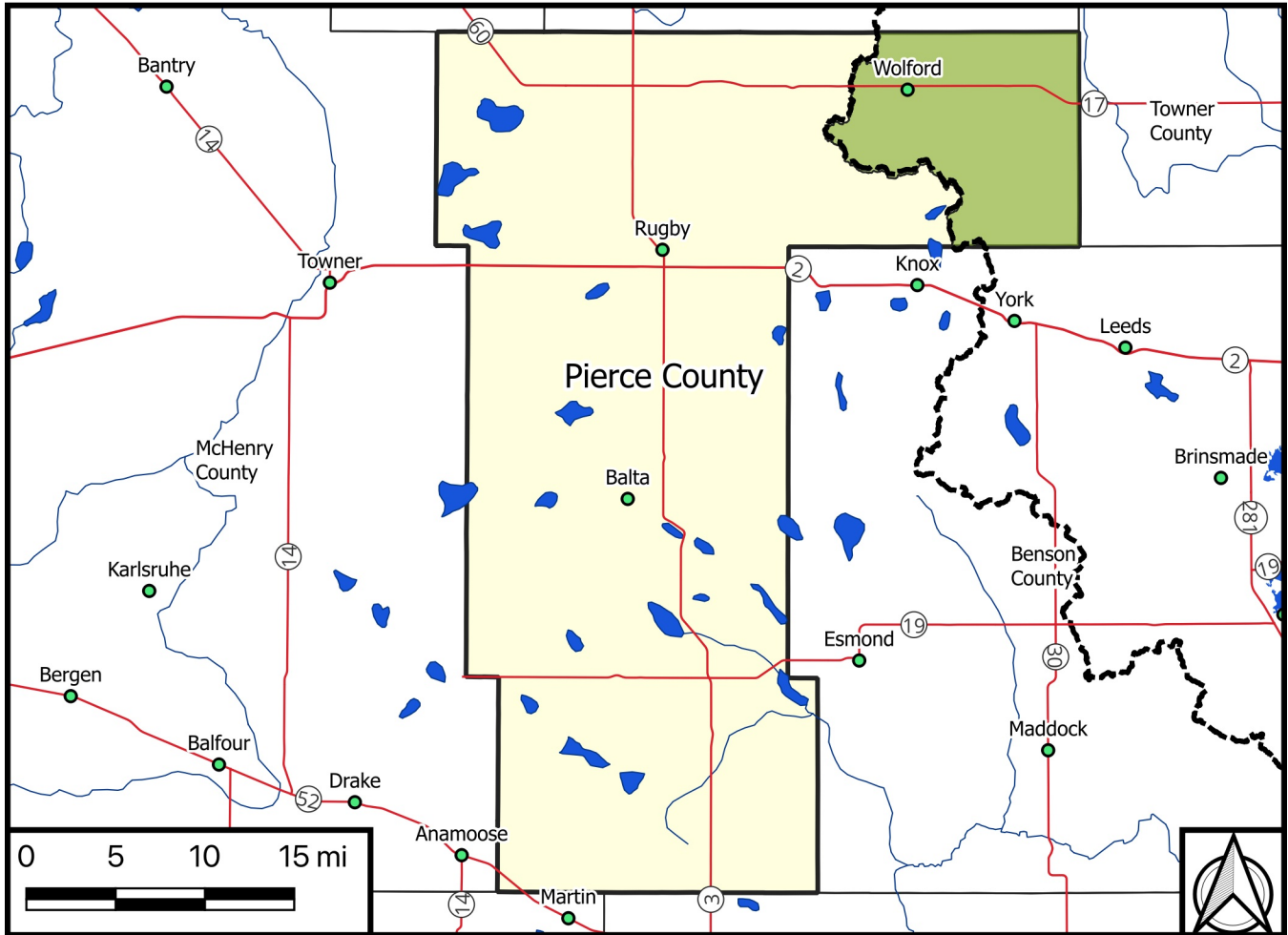
Pierce County within the Devils Lake Basin



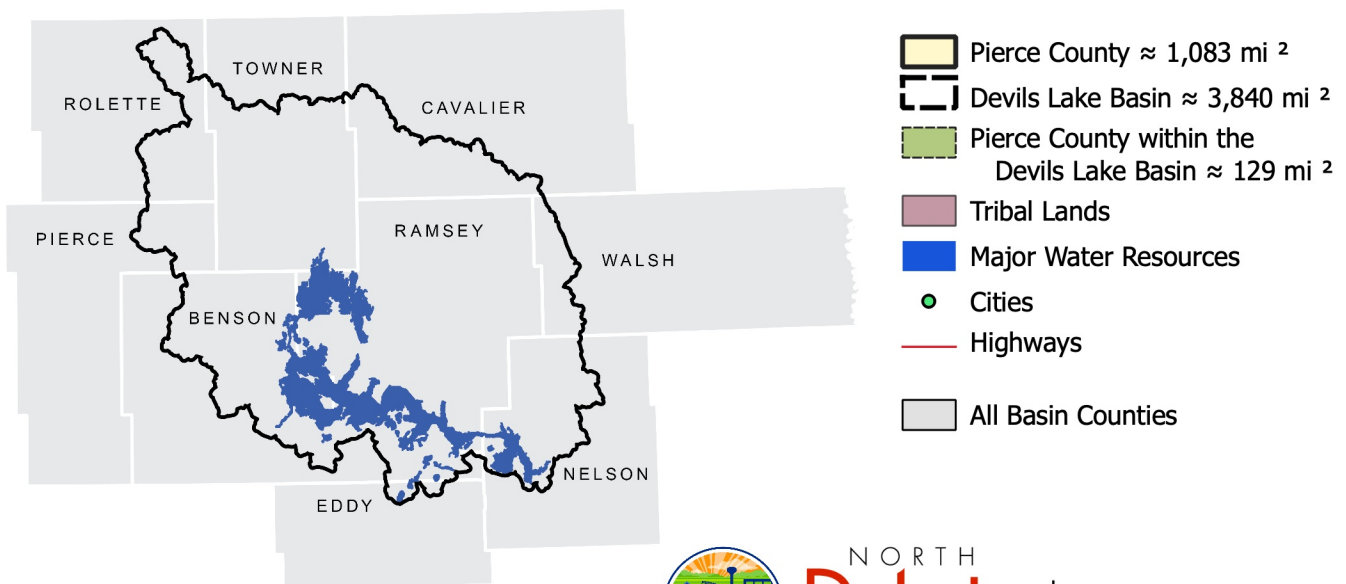
Approximately 12% of Pierce County lies within the Devils Lake Basin
 Approximately 3% of the Devils Lake Basin lies within Pierce County



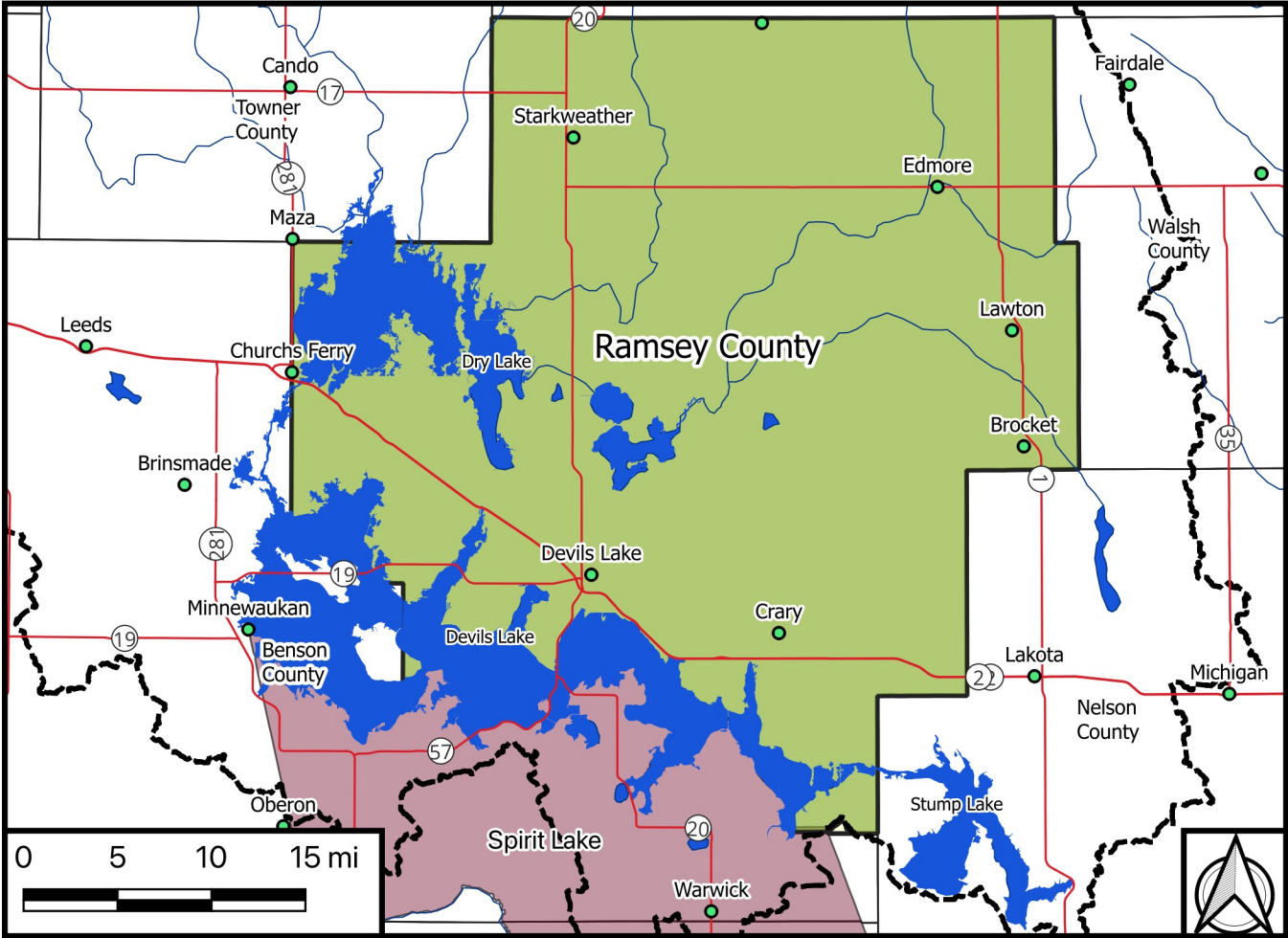
Pierce County within the Devils Lake Basin



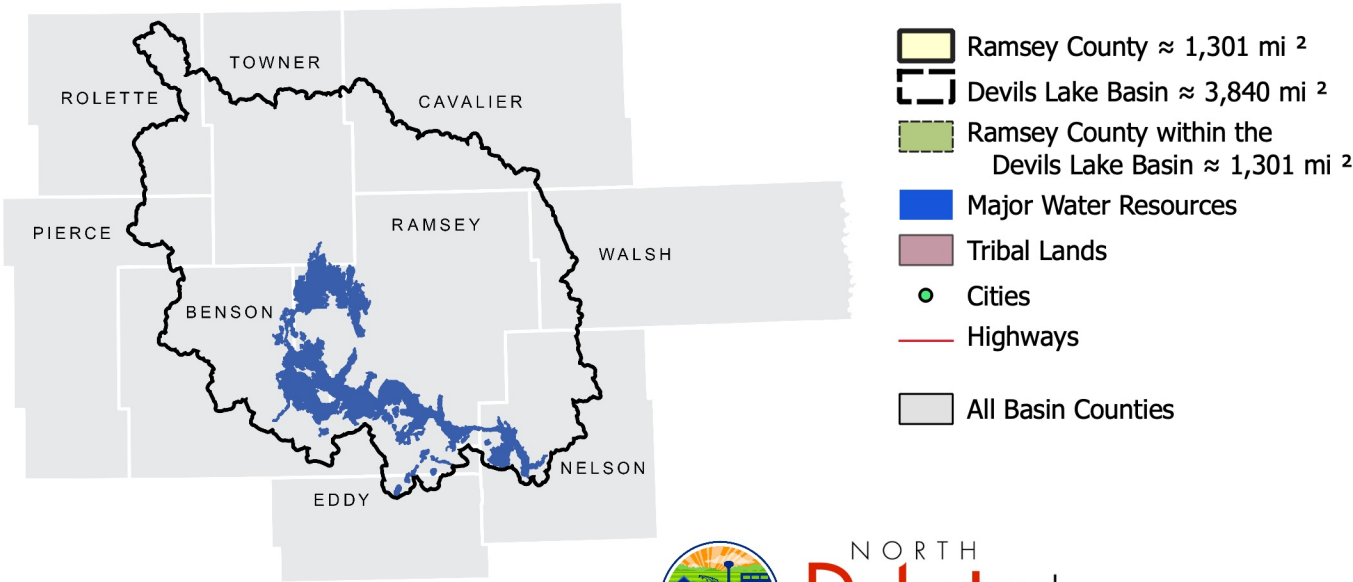
Approximately 12% of Pierce County lies within the Devils Lake Basin
 Approximately 3% of the Devils Lake Basin lies within Pierce County



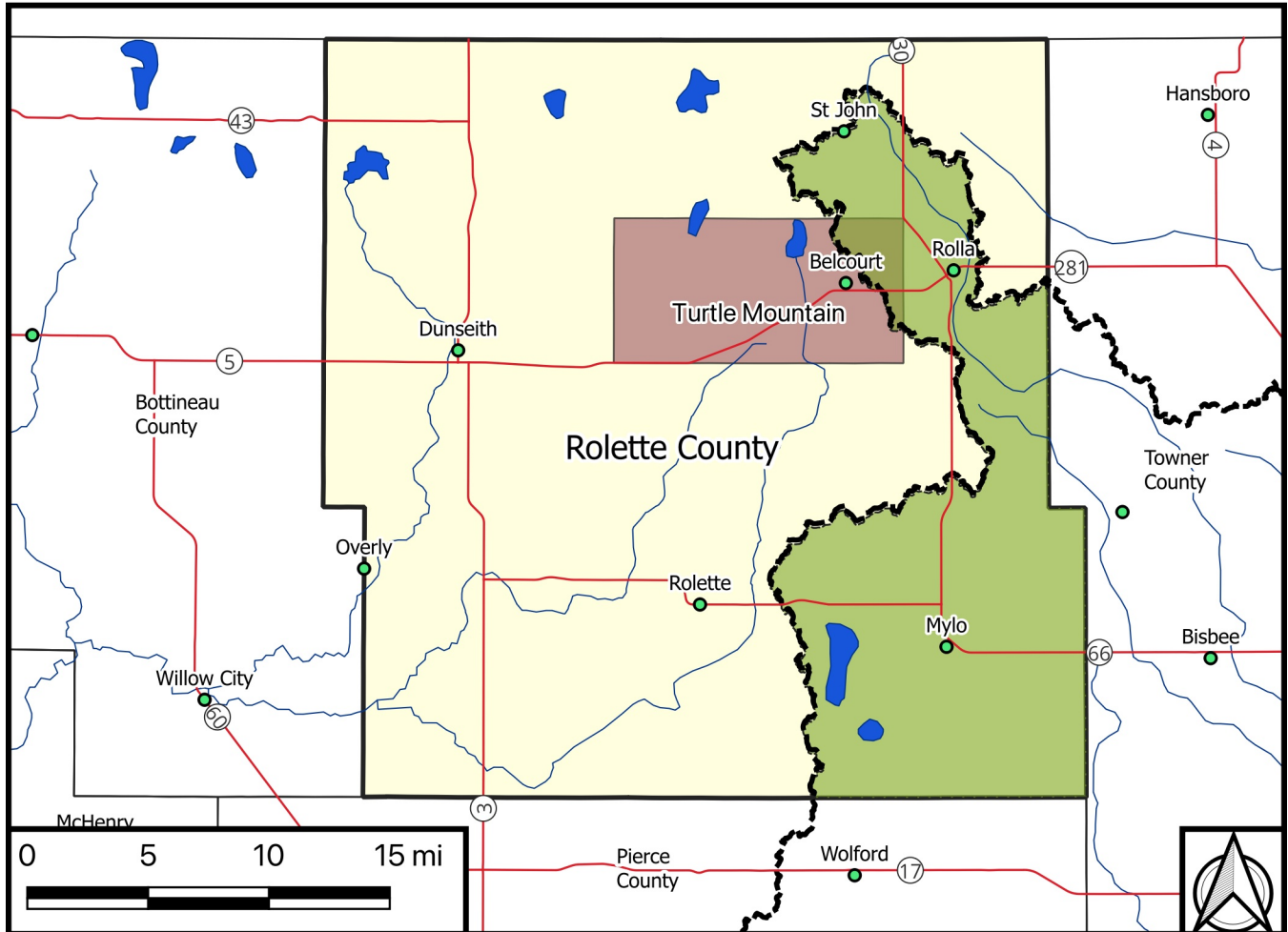
Ramsey County within the Devils Lake Basin



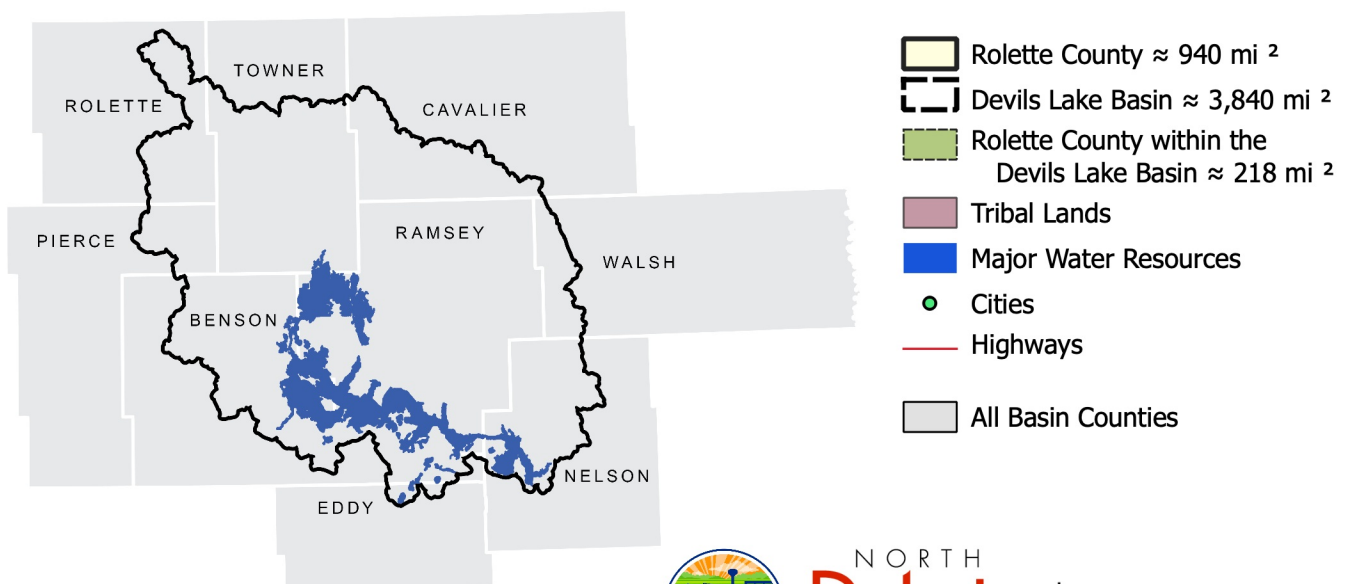
Nearly 100% of Ramsey County lies within the Devils Lake Basin
Approximately 34% of the Devils Lake Basin lies within Ramsey County



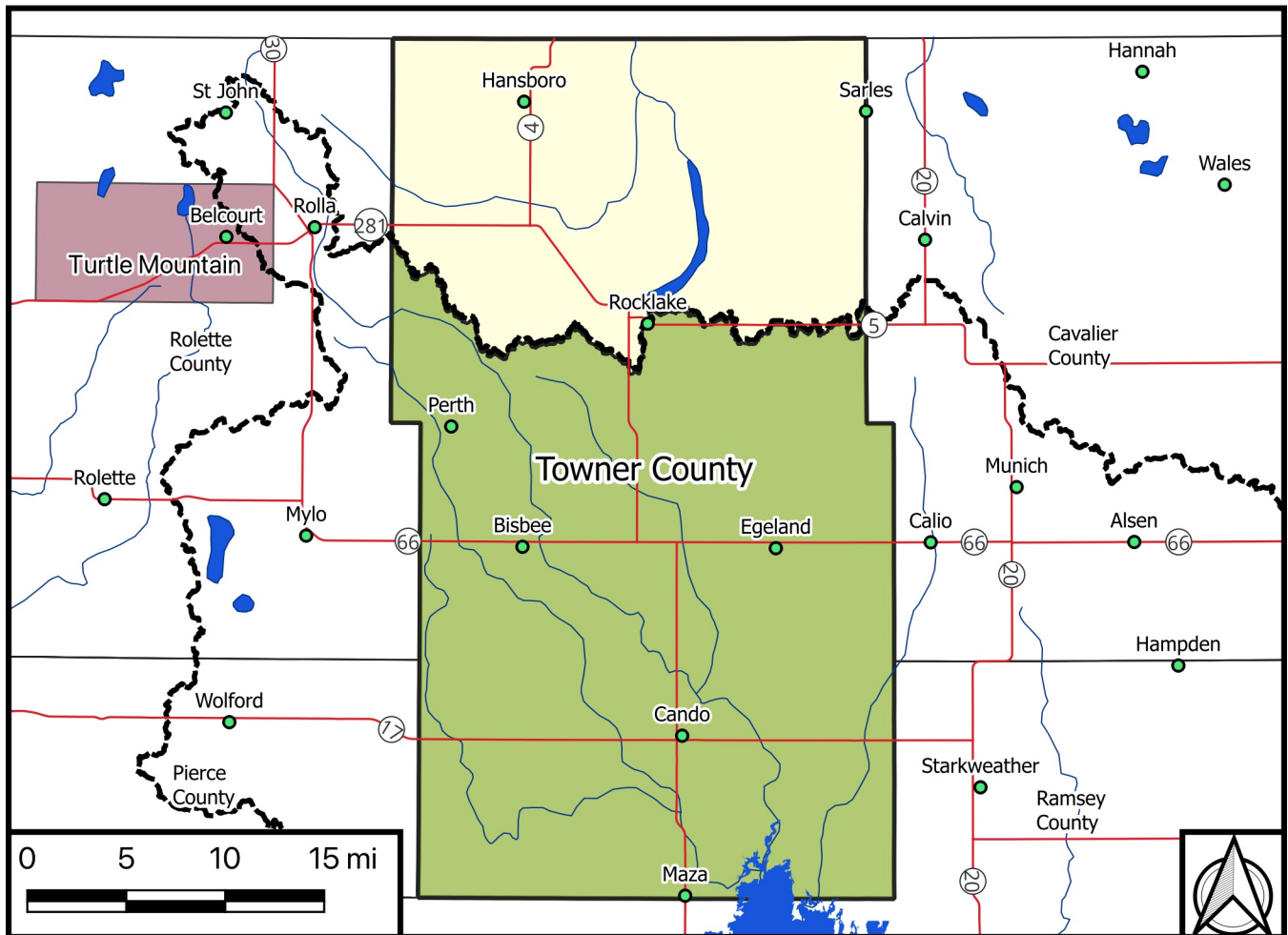
Rolette County within the Devils Lake Basin



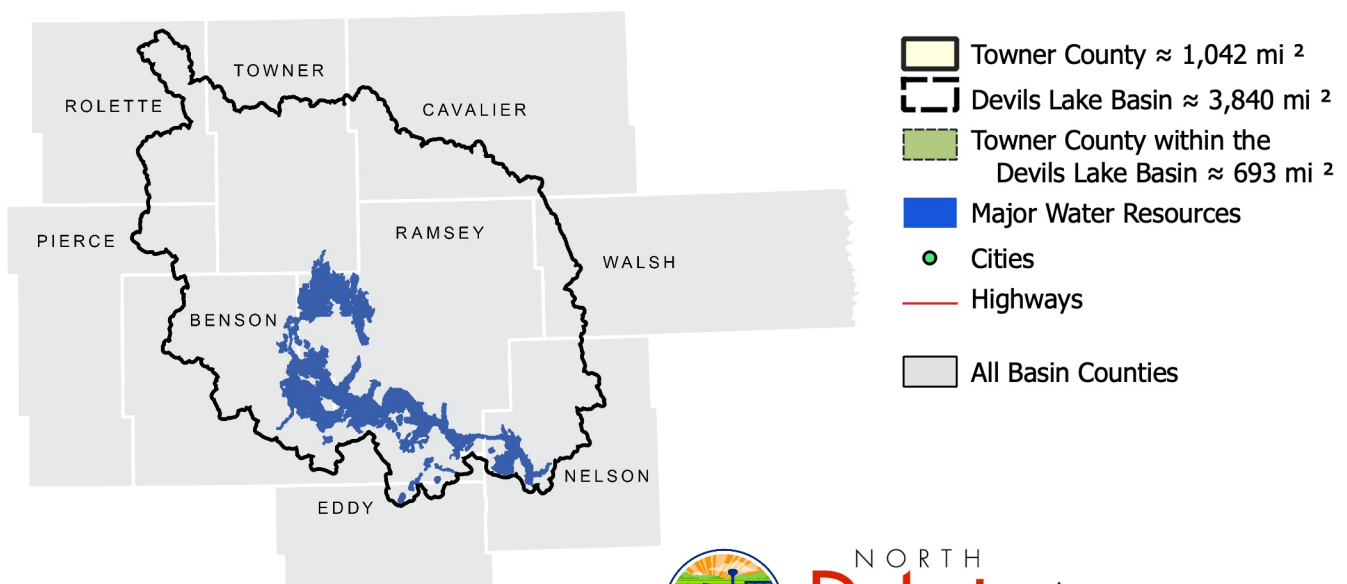
Approximately 23% of Rolette County lies within the Devils Lake Basin
 Approximately 6% of the Devils Lake Basin lies within Rolette County



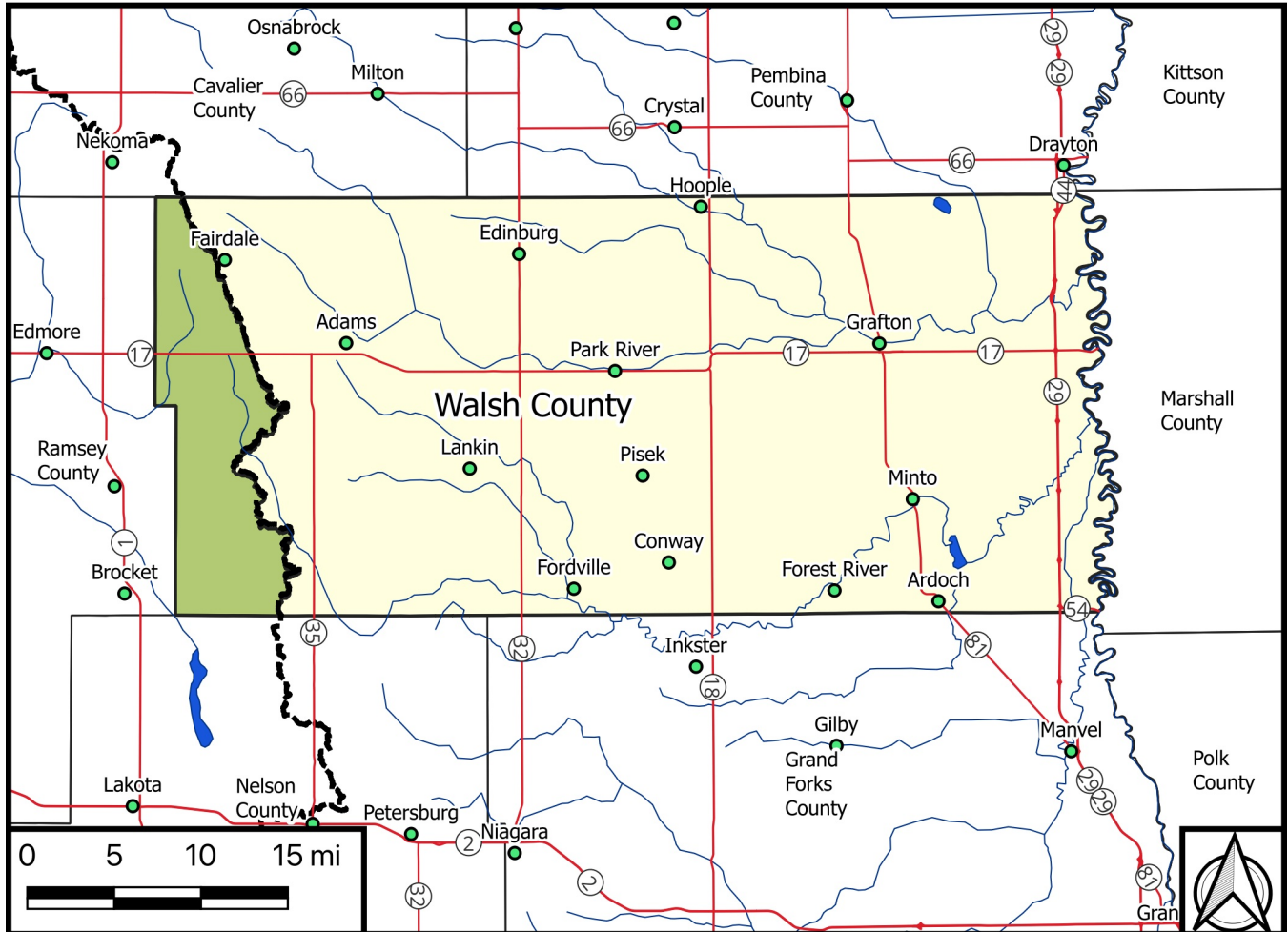
Towner County within the Devils Lake Basin



Approximately 66% of Towner County lies within the Devils Lake Basin
 Approximately 18% of the Devils Lake Basin lies within Towner County



Walsh County within the Devils Lake Basin



Approximately 9% of Walsh County lies within the Devils Lake Basin
 Approximately 3% of the Devils Lake Basin lies within Walsh County

